



1 Woodley Road Glen Osmond SA

4 2 4

Welcome to the ultimate upgrade in lifestyle - a luxury European style home that exemplifies sophistication and harnesses contemporary design to perfection. This is a showstopper, where every need has been anticipated and every detail incorporated. We cannot wait to show you around the approx. 391m² of building that sits on a block of land approx. 595m² in size.

The eye-catching street appeal cannot be overstated - it establishes an organized and purposeful sense of style that resonates throughout the home. Immaculate, orderly landscaped gardens; an exquisite and imposing dual level façade; and a beautifully paved long driveway work together for flawless aesthetics.

Type : House
Price : Auction on 9th Nov, 12:30pm (U.S.P.)
Land Size : 595 sqm
View : <https://www.sinova.com.au/sale/sa/eastern-suburbs/glen-osmond/residential/house/8158872>



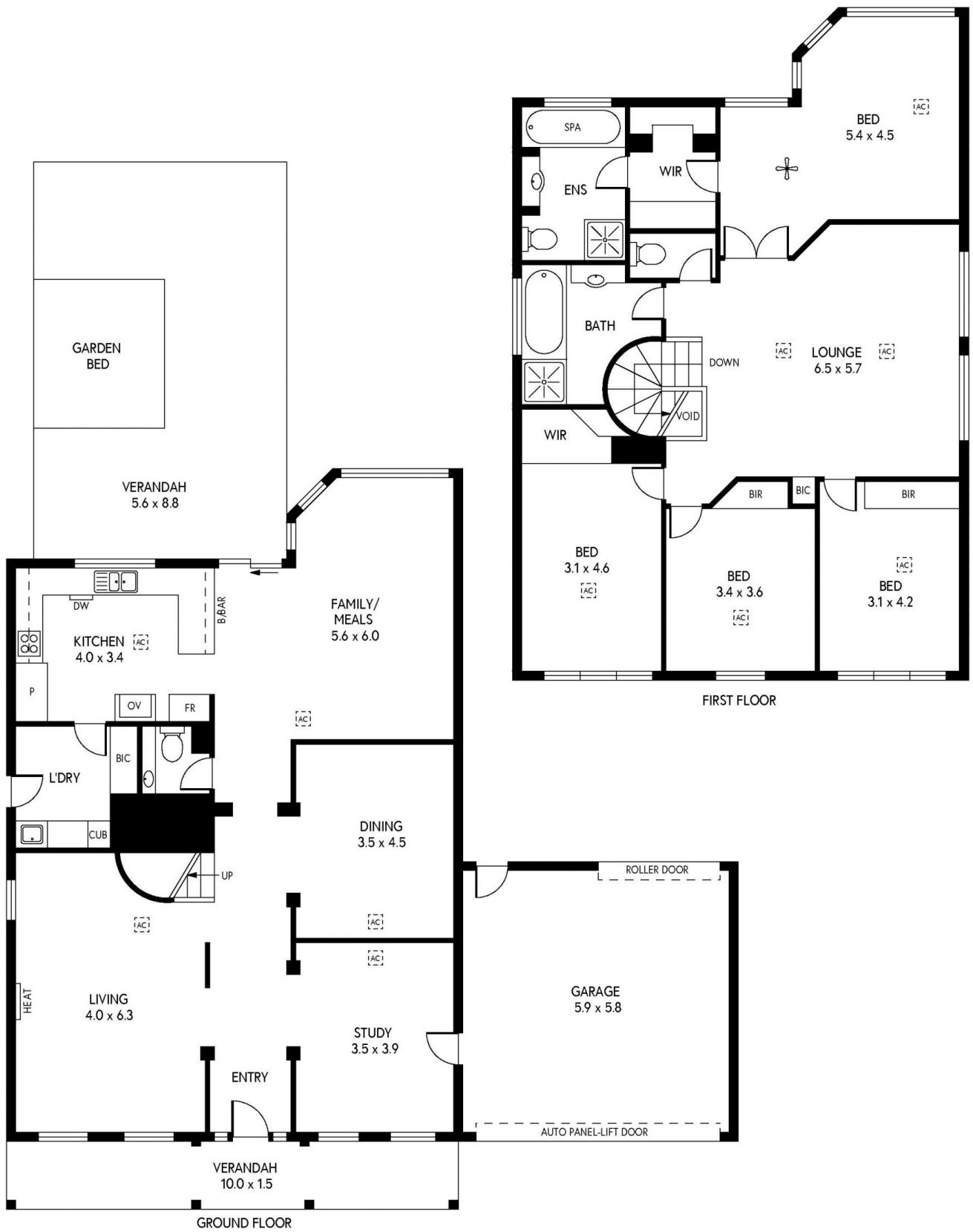
Stephen Ong
08 7080 5884



David Deng
08 7080 5884

[For full version visit the website](https://www.sinova.com.au)

<https://www.sinova.com.au>



1 WOODLEY ROAD, GLEN OSMOND

	INTERNAL	- 266.0 SQM
	EXTERNAL	- 125.9 SQM
	TOTAL	- 391.9 SQM