



16 Gilles Road Glen Osmond SA

5 🚗 4 🚗 2 🚗

Prepare yourself for a masterclass in modern architecture and genre-spanning construction. A jaw-dropping tribute to luxurious living, a conscientious endeavour in design that tests the uppermost boundaries of opulence. Prepare yourself for 16 Gilles Road. Sitting in a sought-after enclave of Glen Osmond, the harmonious combustion of sophistication, style and panache represents the future of high-end real estate. Welcome to the new benchmark - welcome to Sinova's latest listing.

Arriving at the sprawling approx. 660sqm property, the bold two-level façade towers above you, breathtaking in its French Provincial aesthetic. The attention to detail found throughout the 424sqm approx. build is immediately evident in the immaculate landscaped front yard. What will really grab your attention are the soaring pillars of the front porch, elegantly framing the expansive windows on both

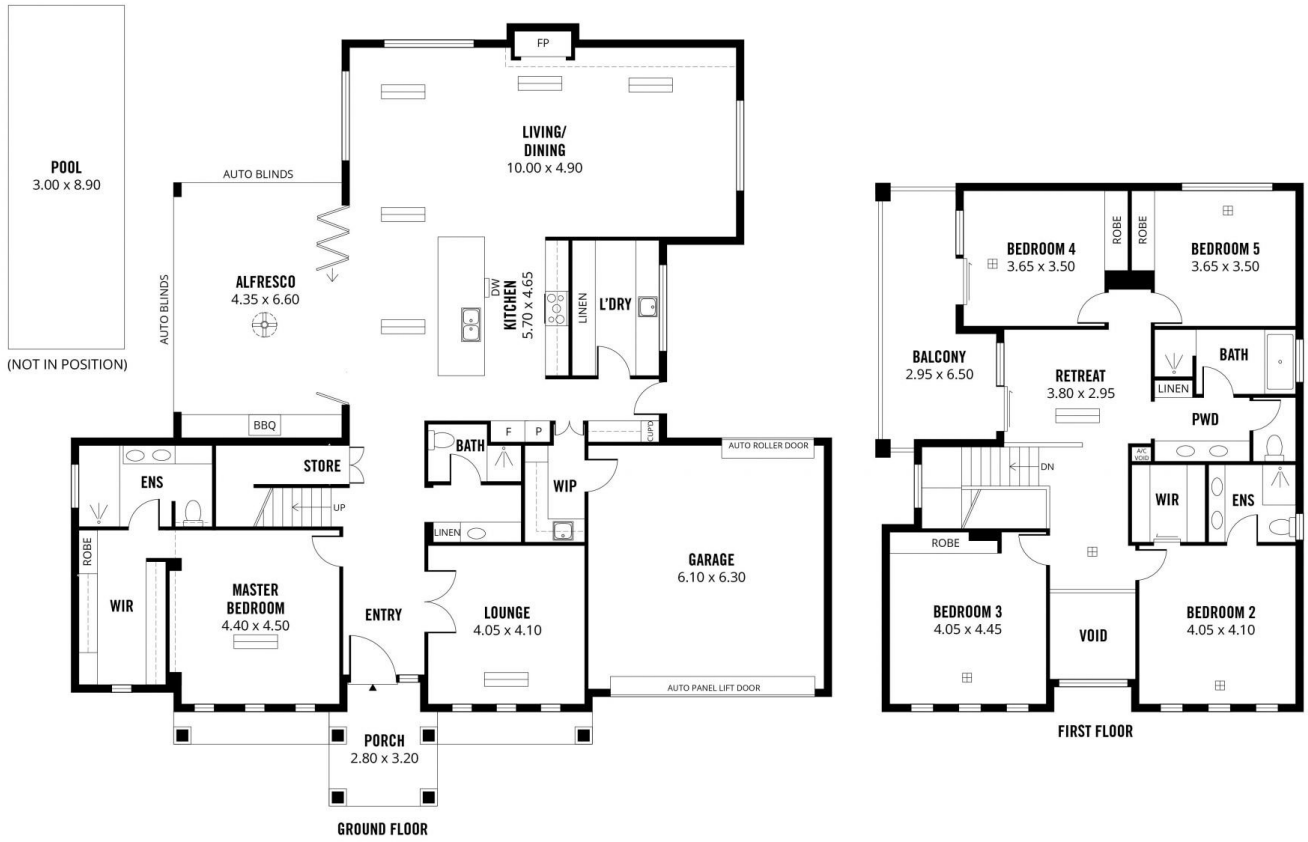
Price : Contact Agent
Land Size : 660 sqm
View : <https://www.sinova.com.au/sale/sa/eastern-suburbs/glen-osmond/residential/house/8007821>



Jarrod Leow
08 7080 5884



Stephen Ong
08 7080 5884



451m²

TOTAL

328m²

Living

43m²

Garage

8m²

Porch

16m²

Balcony

29m²

Alfresco

27m²

Pool



Scale in metres. This drawing is for illustration purposes only. All measurements are approximate and details intended to be relied upon should be independently verified.

Produced by The Fotobase Group