



### 15b Weaver Street Hectorville SA

3 2 2

\*\*\* How to apply: If you wish to apply for this property, Please apply through realestate.com.au using the APPLY button

**View** : <https://www.sinova.com.au/lease/sa/eastern-suburbs/hectorville/residential/house/7883391>

Bond - 4 weeks rent equivalent

Lease term - 12 months

Water charges - Tenant to pay all water usage and water supply charges

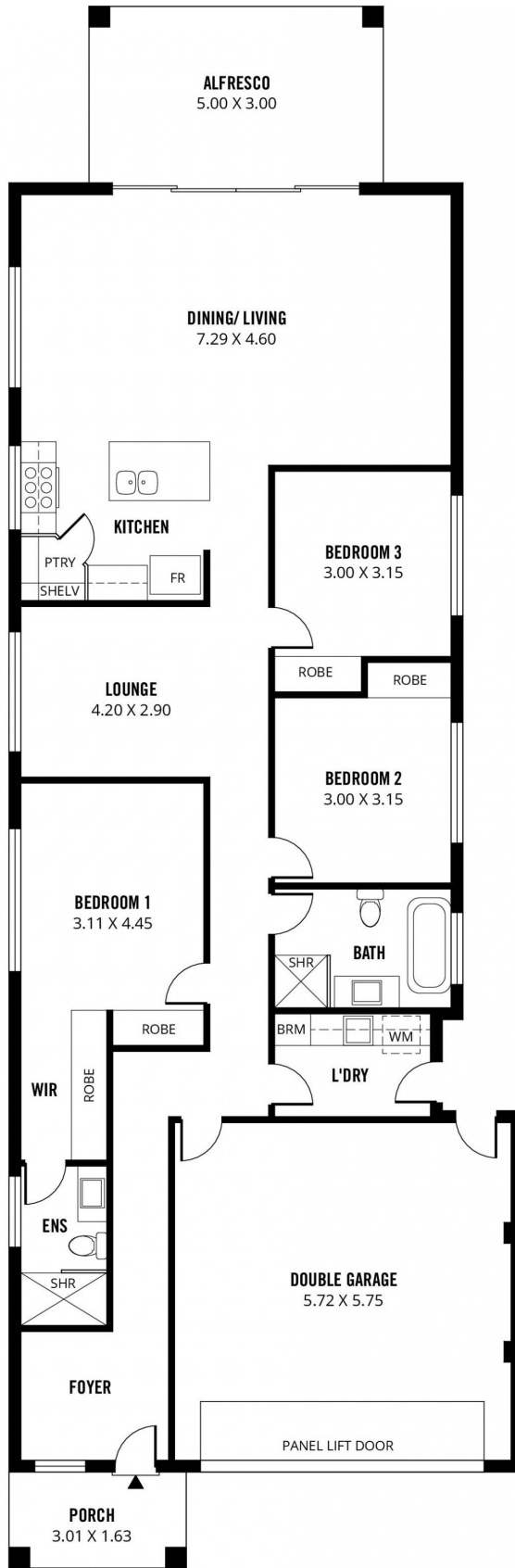
- Built-in robes
- 2.7-metre high ceilings
- North-facing living area
- LED lighting throughout
- 40mm stone benchtops in kitchen
- Stainless steel SMEG 900mm gas cooktop & rangehood, 600mm Oven and dishwasher;
- Undermount sink and quality tapwares



**David Deng**  
08 7080 5884



**Hannah Wong**  
08 7080 5884



195m<sup>2</sup>

TOTAL

139m<sup>2</sup>

Living

15m<sup>2</sup>

Alfresco

36m<sup>2</sup>

Garage

5m<sup>2</sup>

Porch



Scale in metres. This drawing is for illustration purposes only. All measurements are approximate and details intended to be relied upon should be independently verified.

Produced by The Fotobase Group