



1A Wallira Street South Plympton SA

5 2 2

Very rarely do all the things important to you in a home present themselves in one attractive package. Room for the entire family and more? Yes. Next level security? Yes. Low-maintenance yard? Yes. Ultra-convenient location? Definitely. This double-storey, five-bedroom home will tick so many boxes for families, investors or professionals. We're positive it'll fulfil your dreams!

Sitting on a fully fenced corner block, the double storey home, built in 2015, is strikingly prominent. It's encircled by a low-maintenance, landscaped yard, with an electric gate allowing vehicle access to the lock up garage, plus a shed at the back. A pedestrian gate opens onto a garden path that leads to the front porch and into the lower level of the home.

Once inside, soaring ceilings and plenty of natural light help

Price : \$ 970,000

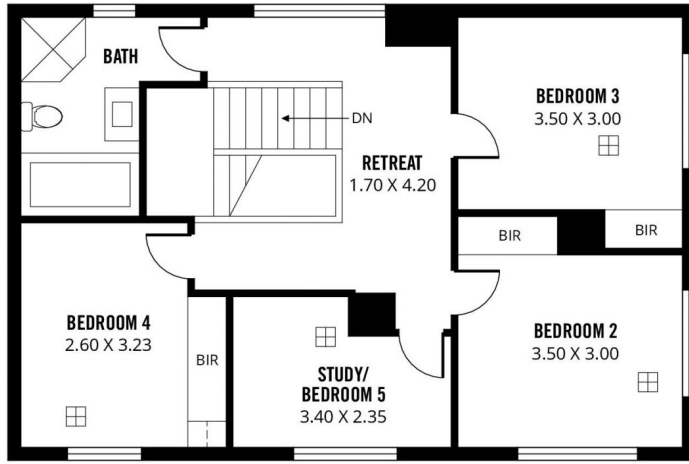
View : <https://www.sinova.com.au/sale/sa/south-south-east-suburbs/south-plympton/residential/house/7425033>



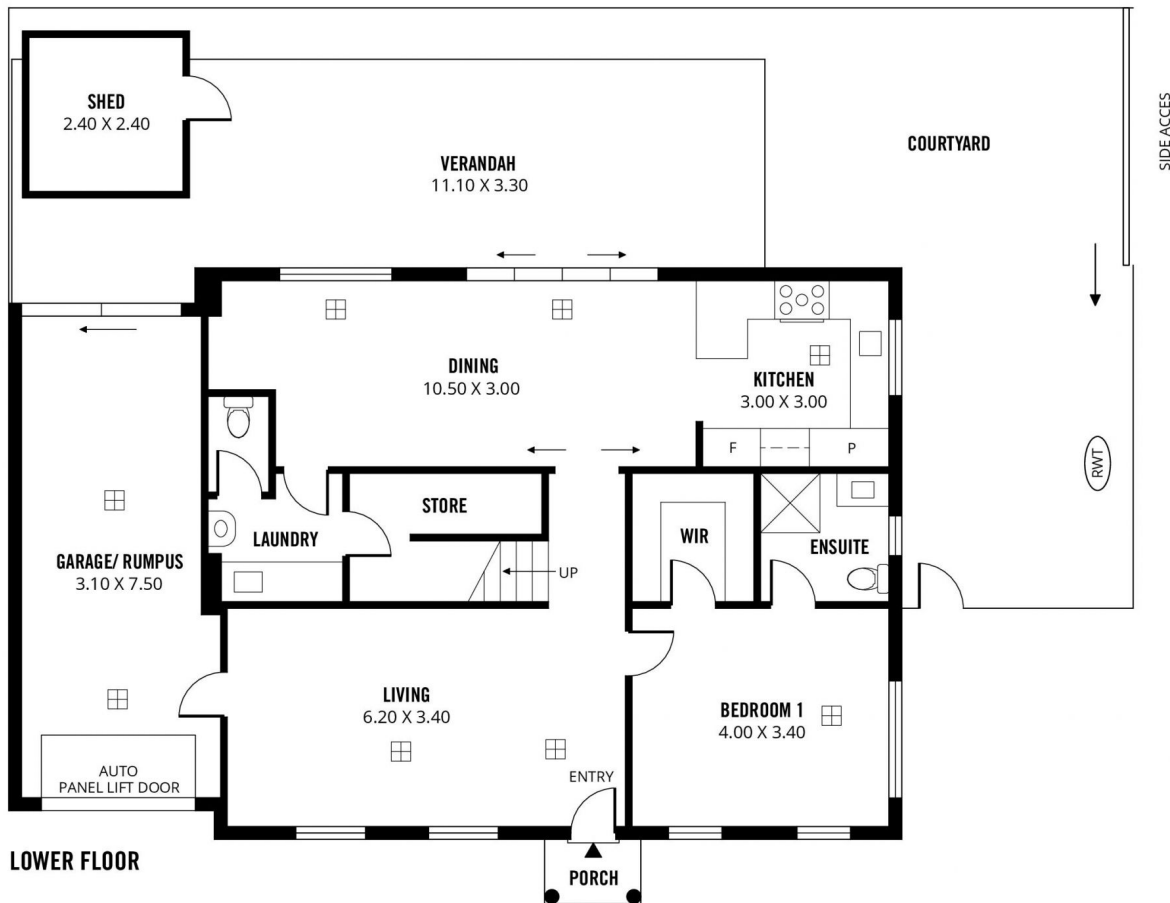
Jarrod Leow
08 7080 5884



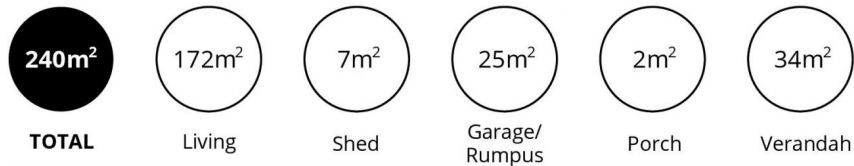
Chea Chee Tan
0405 018 873



UPPER FLOOR



LOWER FLOOR



Scale in metres. This drawing is for illustration purposes only. All measurements are approximate and details intended to be relied upon should be independently verified.

Produced by **The Fotobase Group**