

**13/10 Briar Road Felixstow SA**

3 2 3

Public Open inspection Wednesday 26th of May 2021 5pm - 5:15pm

**View :** <https://www.sinova.com.au/lease/sa/eastern-suburbs/felixstow/residential/townhouse/6446280>

Bond - 6 Weeks rent equivalent

Pets - Sorry, not allowed

Furniture - Unfurnished

Water Charges - All water usage and water supply

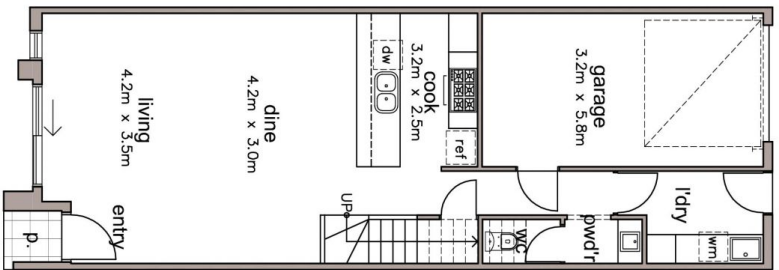
If you wish to apply for this property, Please apply through [www.1form.com.au](http://www.1form.com.au) and send your application to [info@sinova.com.au](mailto:info@sinova.com.au)



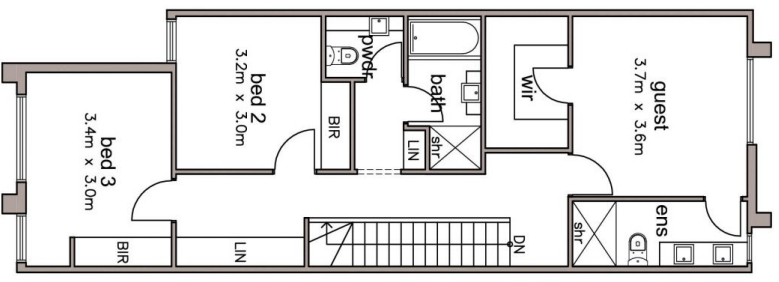
**Maggie Du**  
**08 7080 5884**

Located less than 8km from Adelaide's CBD in the ultimate 'convenience suburb' of Felixstow, this low-maintenance townhouse comprising the best modern fixtures and fittings.

<https://www.sinova.com.au>



GROUND FLOOR PLAN



UPPER FLOOR PLAN

NOTE: THIS PLAN/DOCUMENT IS FOR ILLUSTRATION PURPOSES ONLY. ALL DIMENSIONS ARE APPROXIMATE. WHILE EVERY ENDEAVOUR HAS BEEN MADE TO VERIFY THE CORRECT DETAILS WITHIN THE VERSION THE AGENT/ FOR THE DESIGNER ACCEPTS LIABILITY FOR ANY ERROR OR OMISSION.

DWELLING 24 AREAS (sqm)

GROUND MAIN LIVING	UPPER MAIN LIVING	GARAGE	PORTICO	TOTAL
61.50	79.50	20.50	2.00	163.50

